

The H.E.L.P Team– Healing Every Living Person

(ICWF) Framework Architecture

Framework Architecture

Governance, Validation & Replication Infrastructure for Community Wellbeing Systems

Structured. Validated. Replicable.

Version 2.0 | March 2026 | The H,E,L.P Team

Prepared for strategic partners and
institutional stakeholders



The Challenge & ICWF Solution

Challenge

Fragmented community interventions
Short-term outcomes
Limited replication structures

ICWF Response

Governance discipline
Evidence-based monitoring
Structured learning systems

Result

Coherent delivery networks
Validated impact models
Responsible regional scaling

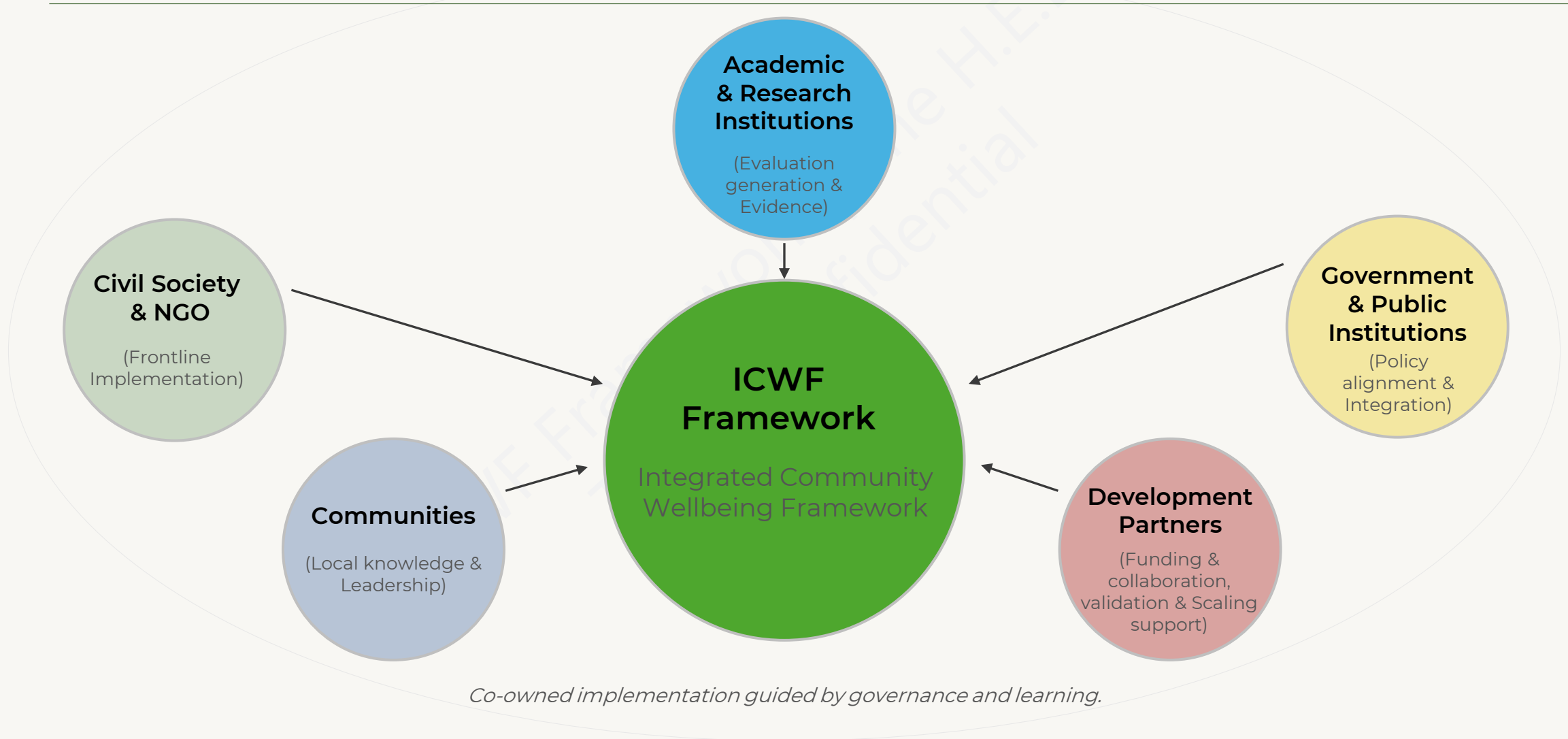
ICWF Guiding Principles

Responsible, Evidence-based, and context-sensitive initiatives.

Principle	Meaning
Evidence Before Expansion	Decision for replication follows proven outcomes
Community Context First	Every site begins with cultural and social baseline
Structured Learning	Continuous monitoring drives programme refinement
Controlled Replication	Scaling only after meeting defined evidence thresholds
Institutional Collaboration	Partnerships ensure scientific credibility and sustainability

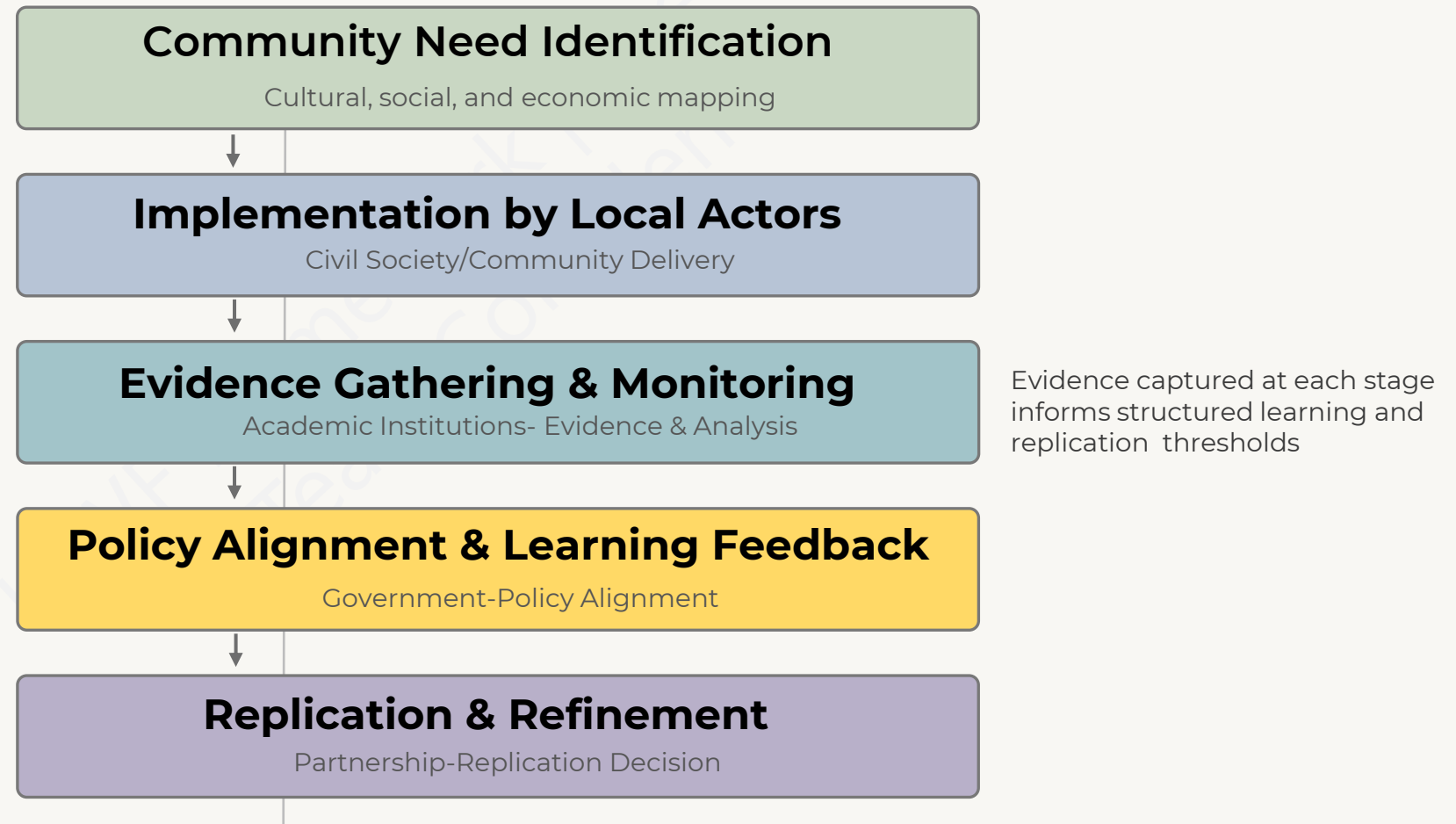
ICWF Multi-Sector Implementation Ecosystem

A collaborative architecture aligning multiple actors



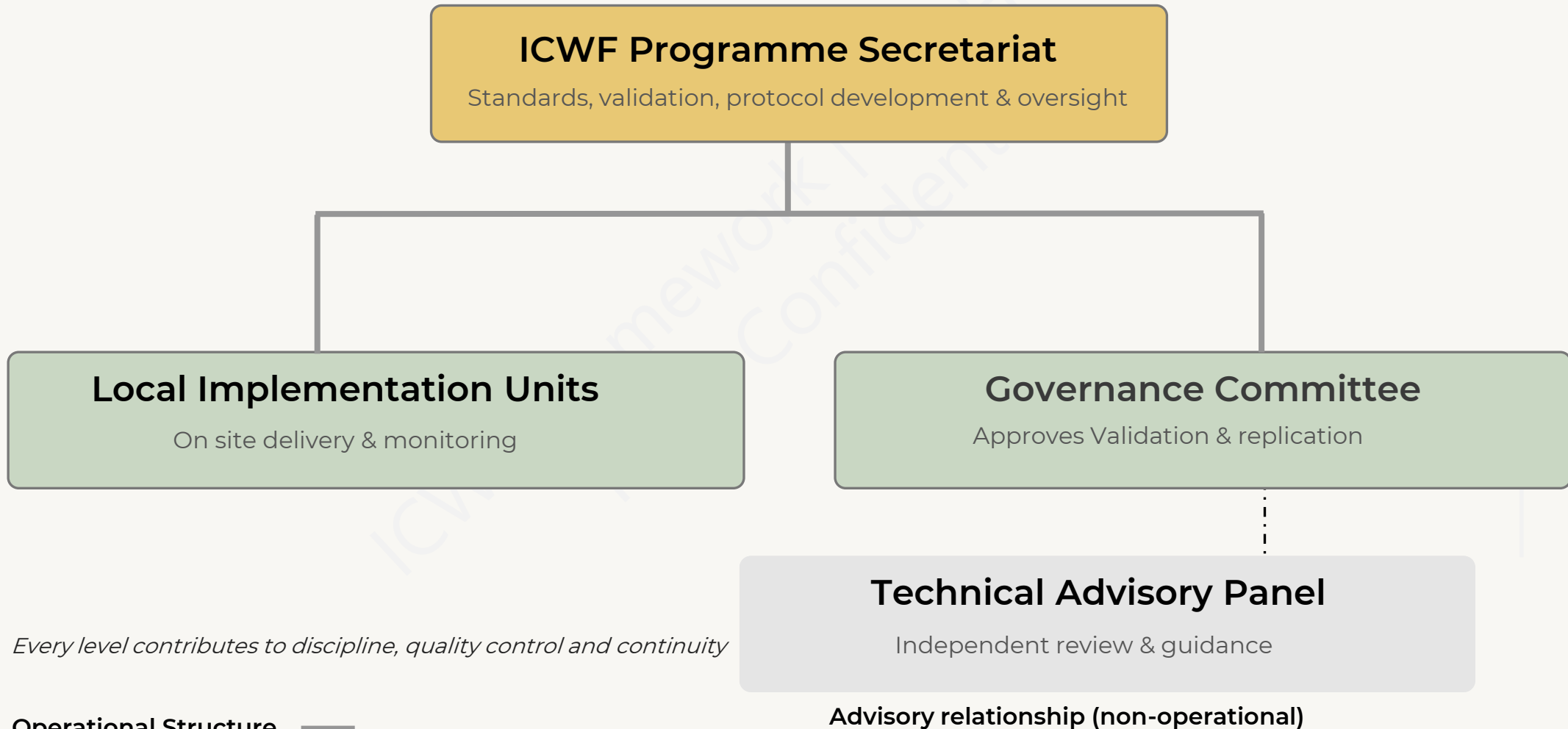
ICWF Evidence Lifecycle: From Needs to Validation

Evidence Lifecycle Architecture



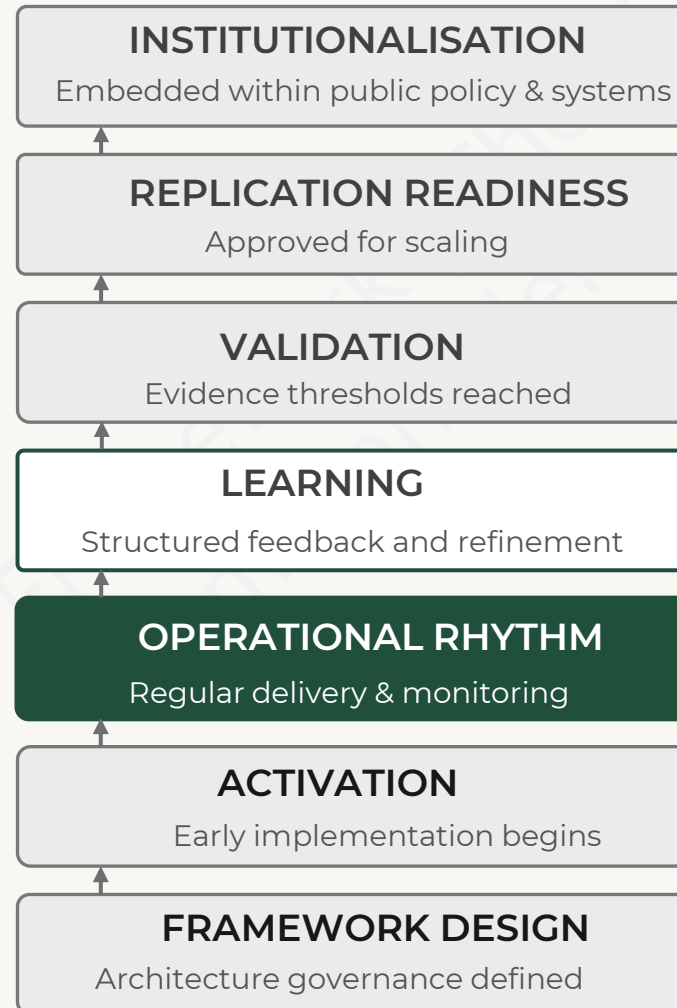
Replication & Governance Framework

Layered oversight ensures accountability and quality.



From Learning to Institutionalisation

ICWF Maturity Ladder



Current position:

Transitioning from Operational Rhythm to Structured Learning

Progression from Pilot activation to institutional model

West Africa Demonstration Platform

Testing and validating the ICWF model



Implementation across diverse cultural systems

Focus areas:

- Youth livelihoods;
- Women-led enterprise
- Culture-based development.

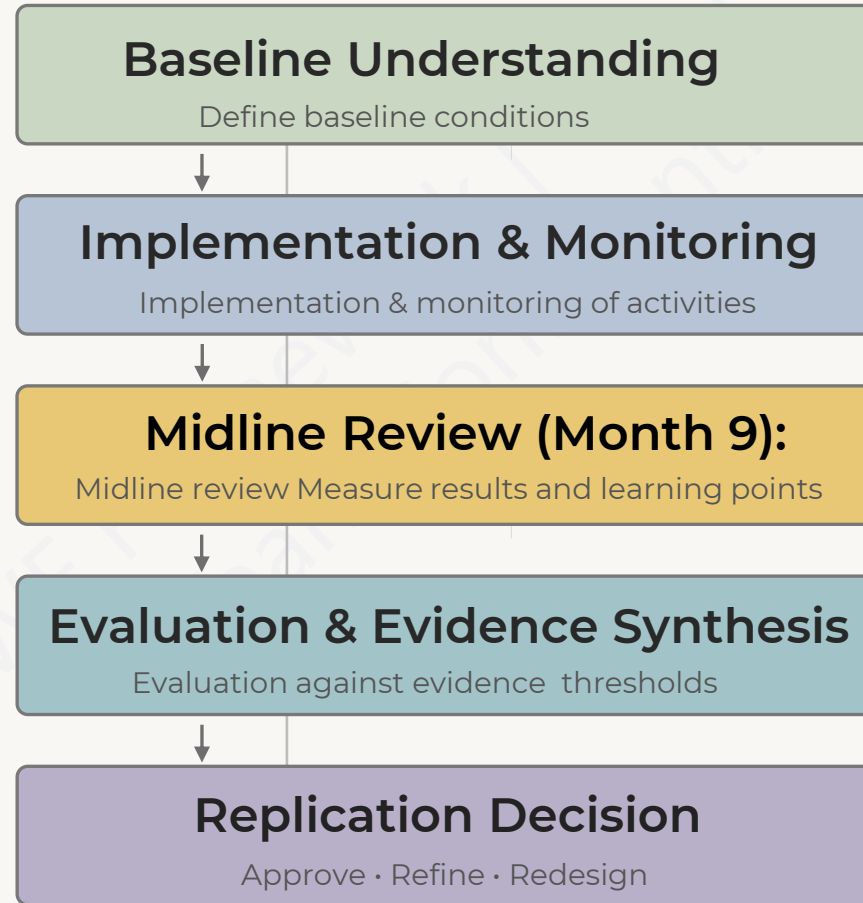
Countries:

Nigeria, Senegal, The Gambia, Morocco, Ghana, and Mali

West Africa serves as a validation lab for continental wide replication

Validation & Learning Cycle

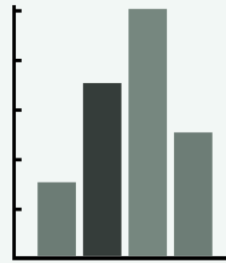
Evidence Lifecycle Architecture



Learning leads progress- replication is earned not assumed

ICWF Strategic Impact & Partnership Pathways

How ICWF generates lasting value



Community Systems

Stronger wellbeing structures

Evidence-Driven Development

Measurable improvement frameworks

Policy Coordination

Integration with public institutions

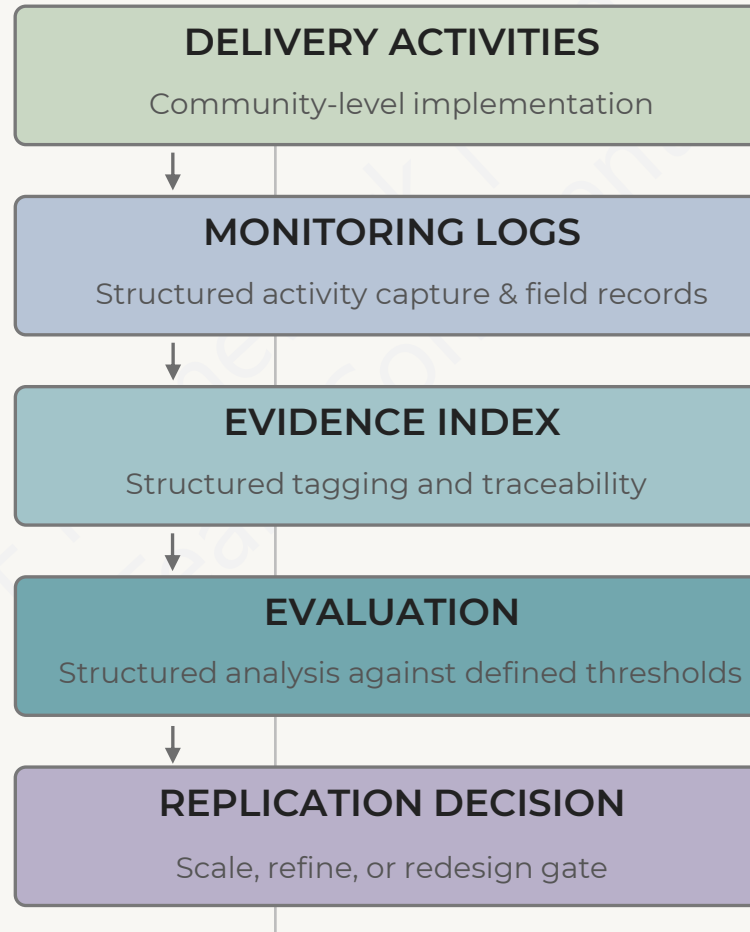
Multi-Stakeholder Collaboration

Shared accountability for impact

Regional Scalability

Validated models adapted across Africa

Integrated Community Wellbeing Framework (ICWF)



Evidence captured at each stage informs structured learning and replication thresholds

Future Vision: A scalable African Framework

Towards national and regional systems integration

- Establish validated community wellbeing architecture
- Institutionalise evidence-driven approaches
- Build collaborative platforms between governments, academia & civil society
- Create open-source community learning systems for continental replication

From pilot to policy to institutional model.

Strategic Partnership & Collaboration Opportunities for Community Wellbeing

We welcome collaboration with governments, academia, foundations, and development partners dedicated to building structured, validated and replicable wellbeing systems.

The H.E.L.P Team — Healing Every Living Person

📍 London, United Kingdom

✉ info@thehelpteam.org.uk

🌐 www.thehelpteam.org.uk

Structured. Validated. Replicable.